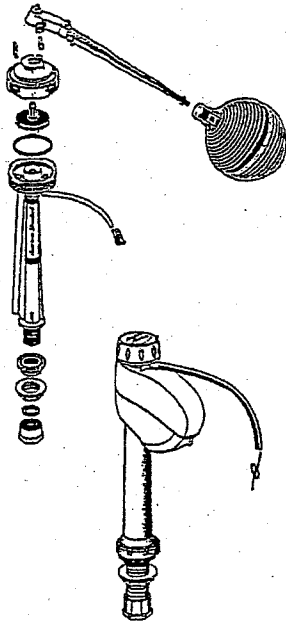


COLONY 1.6 GPF TOILET
MODEL NUMBER

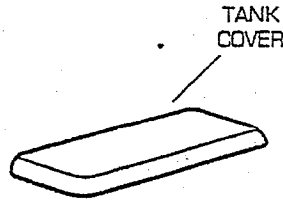
American Standard

2188.012 ROUND-FRONT
 2199.017 ELONGATED

ORIGINAL EQUIPMENT
 WATER CONTROL



REPLACEMENT
 SMART VALVE
 3198.000-B



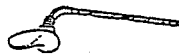
ORIGINAL
 EQUIPMENT
 TRIP
 LEVER

BOLT
 CAPS

ORIGINAL EQUIPMENT
 FLUSH VALVE



ORIGINAL
 EQUIPMENT
 FLAPPER
 ASSEMBLY



REPLACEMENT BRASS ARM TRIP LEVER
 LEFT HAND ONLY 8098.002 CHROME
 AVAILABLE IN THE 8098.020 WHITE
 FOLLOWING COLORS: 8098.099 POLISHED BRASS

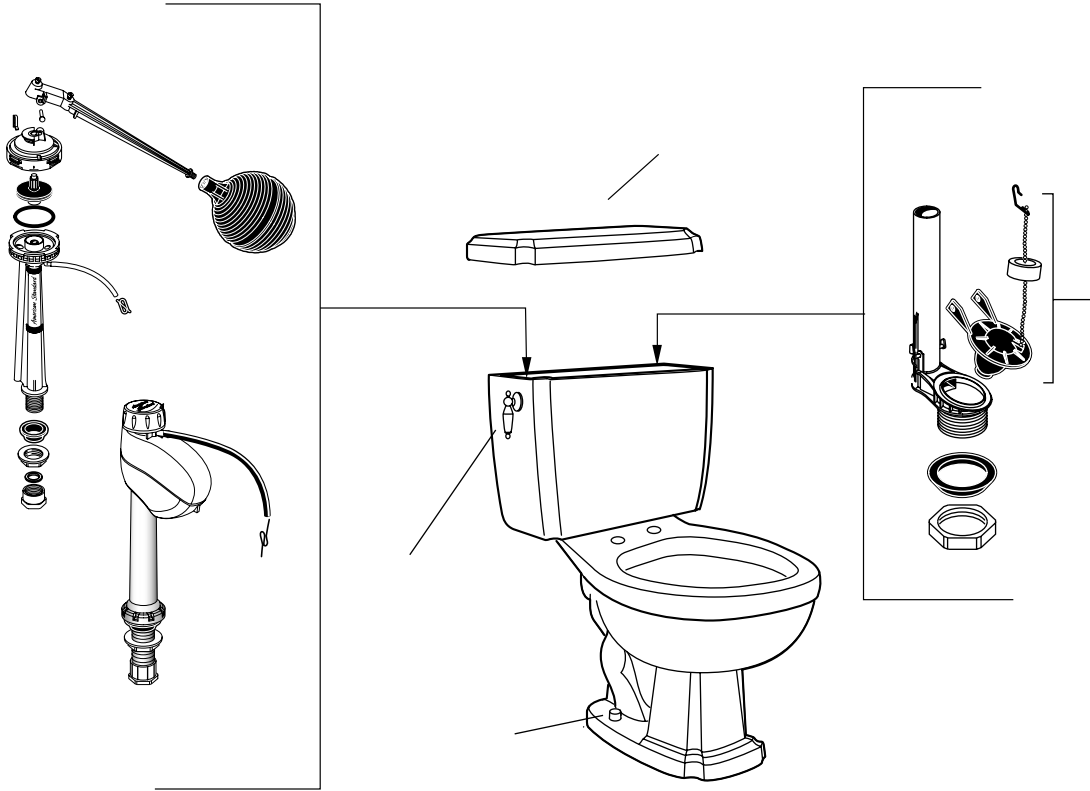
★ Replace XXX with
 Fixture Color Code,
 YYY with Trim Finish

DESCRIPTION	▷ COMPONENT	PKG QTY
★ Round-Front Bowl w/Bolt Caps	3038.012.XXX	1
★ Tank Complete with Trim	4092.012.XXX	1
★ Tank Cover	735003.400.XXX	1
★ Elongated Bowl w/Bolt Caps	3044.017.XXX	
ORIGINAL EQUIPMENT REPAIR PARTS	PART NUMBER	PKG QTY
★ Bolt Cap Kit	034783-XXX0A	2
Coupling Kit, Bowl-to-Tank	047188-0070A	1
Water Control Assembly (with Float Ball)	738145-0070A	1
Flush Valve	738138-0070A	1
★ Trip Lever	047148-XXX0A	1
Flapper Assembly	738159-0070A	1

▷ FOR COMPONENT PART ORDERING SEE CURRENT PRODUCT SELECTOR
 AND PRICING GUIDE.

American Standard

Plumbing Parts Depot
 800-448-8977
 www.ppd1.biz



★ "-\$ " 999 4% &
 %? " \$!@
 4% & %! %%#&

★ \$ 3 " 4\$ 45 \$ -#	▷	!
★ 4\$ 45 \$ -#	6)7 *+8 999	+
★ ' !-\$ " 45 %!	6*:6 *+6 999	
★ ' ."	;*:; *+< 999	
	=6<*68>:* 999	
		!
★ \$ - %	*6;=76>999*)
★ %- ". " / & !"0	=6*)77>**) 999	+
★ %- ". " / \$%#&" ##0	=6*)77>*:: 999	+
, " \$ ##1	=67;*)>**=*	+
\$ #& \$."	=67+67>**=*	+
\$ -" ##"!2\$1	=67+<:>**=*	+

▷