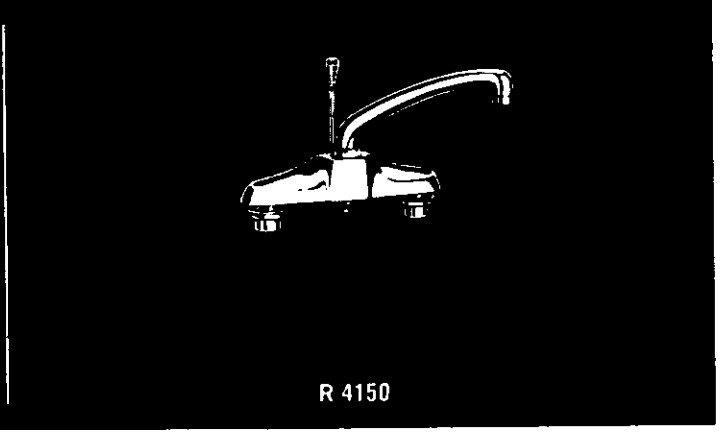
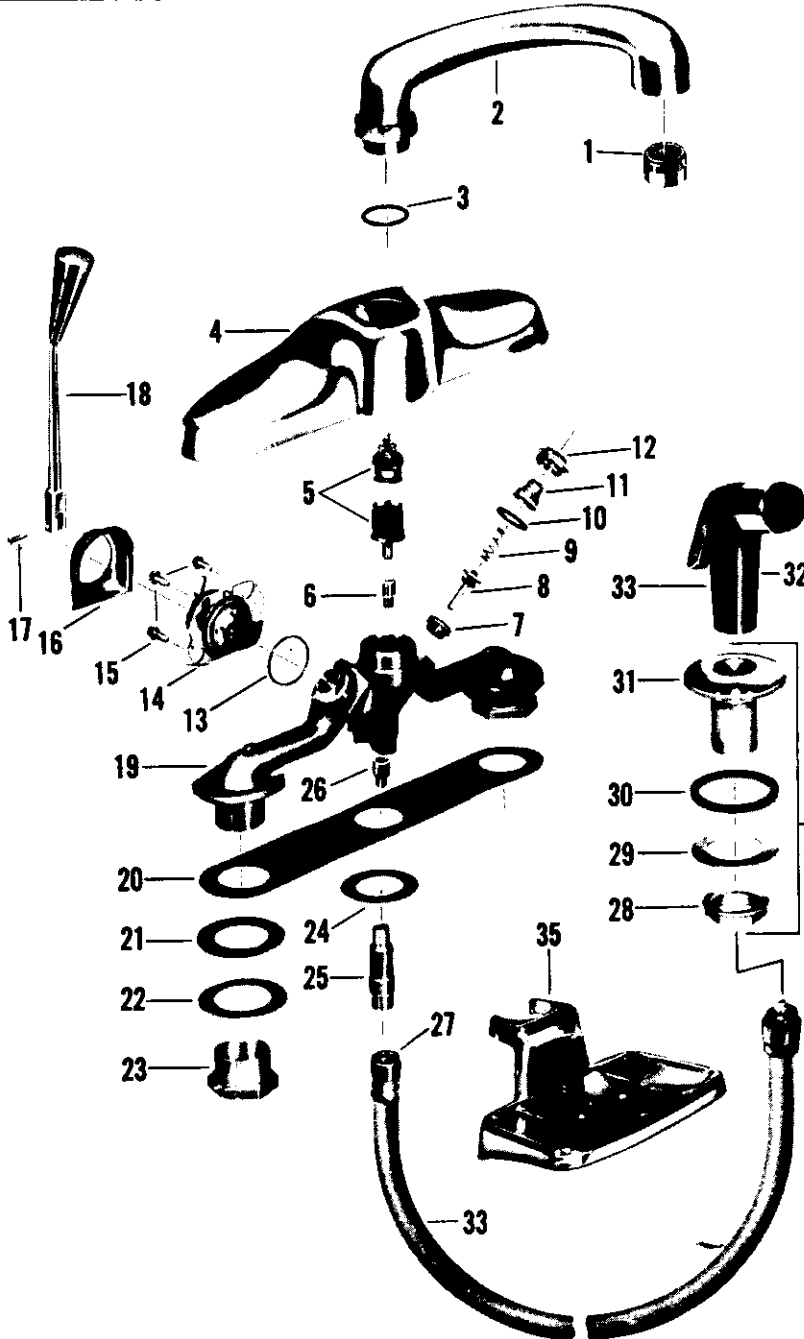


R 4155



R 4150



no.	description	part no.	R 4155	R 4150
1	Aerator	56110-02		
2	Spout S/A	63493-02		
3	"O" Ring	55234-07		
4	Escutcheon	63409-02		
5	Diverter	55470-07		
6	Diverter Stud	12052-07		
7	Seat	12002-07		
8	Stem	12270-07		
9	Spring	12179-07		
10	Gasket	12007-07		
11	Screen	12269-07		
12	Plug	12268-07		
13	Gasket	12035-07		
14	Control S/A	12375-04		
15	Screw	12036-05		
16	Closure	63414-09		
17	Screw	12326-07		
18	Lever S/A	56336-02		
19	Body	63401-07		
20	Gasket	63406-07		
21	Gasket	56523-07		
22	Washer	54528-07		
23	Jamb Nut	56744-07		
24	Washer	63407-07		
25	Connection	63418-07		
26	Plug	56519-09		
27	Hose S/A	1092-27		
28	Nut	24967-08		
29	Washer	1013-29		
30	Gasket	497-17		
31	Spray Escutcheon	25895-02		
32	Spray Head	1169-22		
33	Spray & Hose S/A	1035-12		
34	Spray Escutcheon S/A	7827-02		
35	Soap Dish	63435-02		

Note - Lever & Control S/A Parts 14, 17 & 18 furnished under part #56342-02
 Body S/A Parts 7 & 19 furnished under part #12277-05
 Lever S/A Parts 17 & 18 furnished under part #56341-02
 Spout S/A Parts 1-2 & 3 furnished under part #63410-02

Modernization Kit #12331-07 is available and consists of parts:

(2) Valve Stem	12270-07	(1) "O" Ring	55234-07
(2) Spring	12179-07	(2) Screens	12269-07
(2) Seat	12002-07	(2) Gaskets	12007-07