

INNSBROOK URINAL

INTERNAL COMPONENTS

American Standard

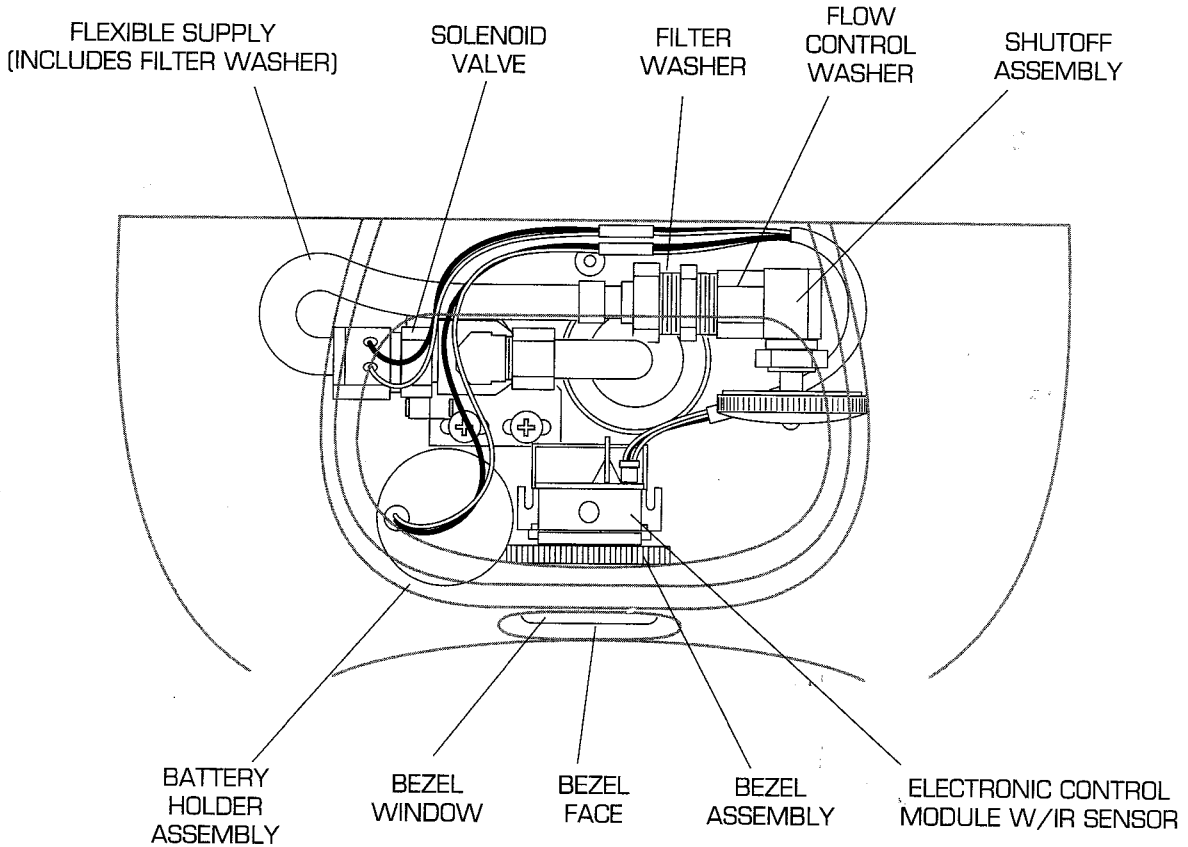
MODEL NUMBERS

**6520.001 PROXIMITY
BATTERY POWER
6520.003 PROXIMITY
HARD WIRE**

Plumbing Parts Depot ☐

610-495-8790 ☐

www.ppd1.biz



USABLE ON	DESCRIPTION	PART NUMBER	PKG QTY
6520.001 OR 6520.003	Flexible Supply (Includes Filter Washer)	738234-0070A	1
	Solenoid Valve	738112-0070A	1
	Filter washer	738198-0070A	1
	Flow Control Washer	738189-0070A	1
	Shutoff Assembly	738199-0070A	1
	Bezel Window	738117-0070A	1
	Bezel Face	738146-0070A	1
	Bezel Assembly	738148-0070A	1
	Electronic Control Module w/IR Sensor	094339-0070A	1
	Special Screwdriver	738300-0070A	1
.001	Battery Holder Assembly	094365-0070A	1
.003	Power Supply	738227-0070A	1
	DC Power Cord (36")	094366-0070A	1

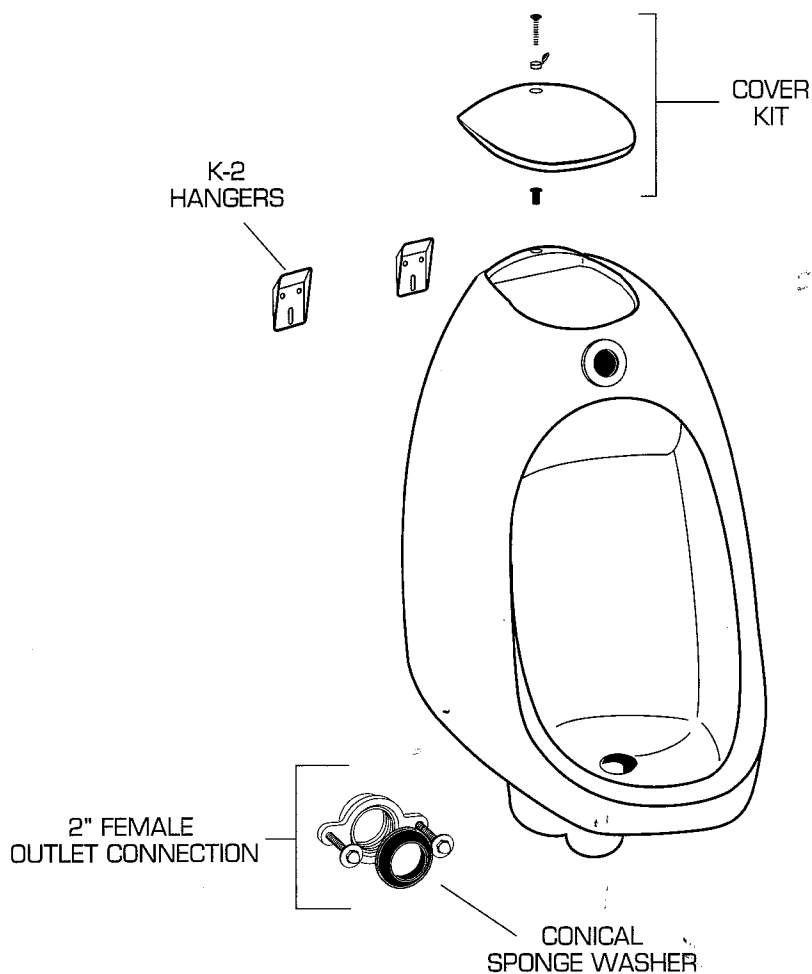
American Standard

INNSBROOK URINAL

MODEL NUMBERS

**6520.001 PROXIMITY
BATTERY POWER
6520.003 PROXIMITY
HARD WIRE**

Depot 610-495-8



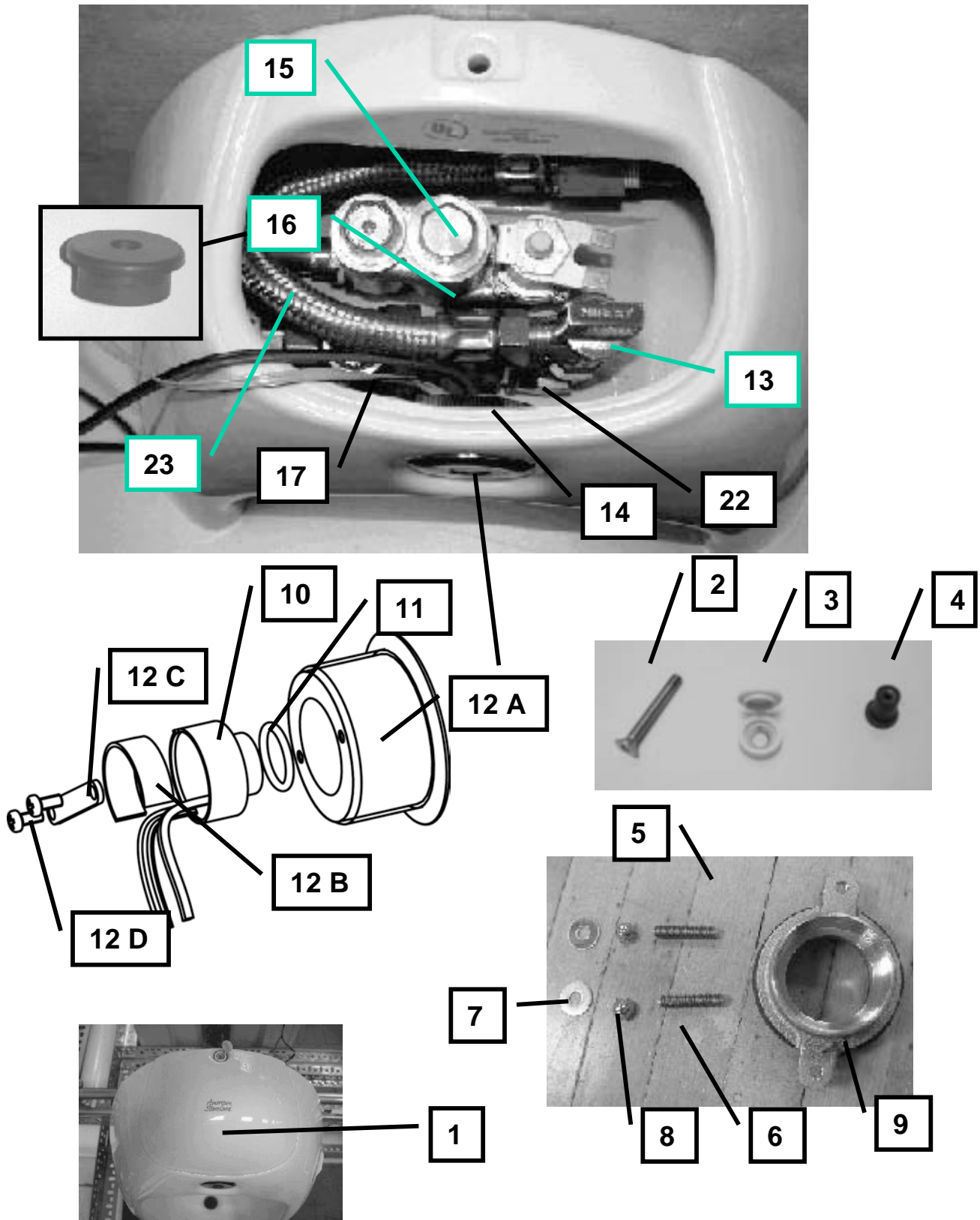
DESCRIPTION	PART NUMBER	PKG QTY
★ Cover Kit	738232-XXXOA	1
K-2 Hanger (2 required)	047058-007OA	1
2" Female Outlet Connection w/Bolts, Washer, and Conical Sponge Washer	047082-007OA	1
Conical Sponge Washer	034638-007OA	1
Strainer	047068-007OA	1
★ Cover Mounting Kit	738233-XXXOA	1

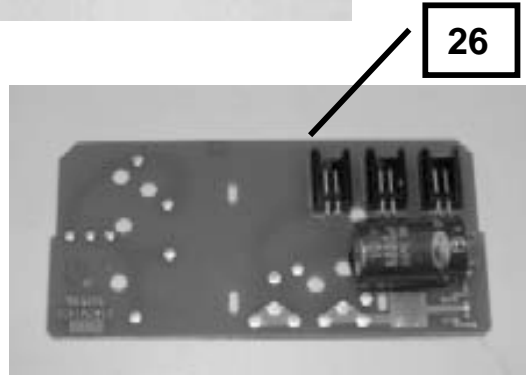
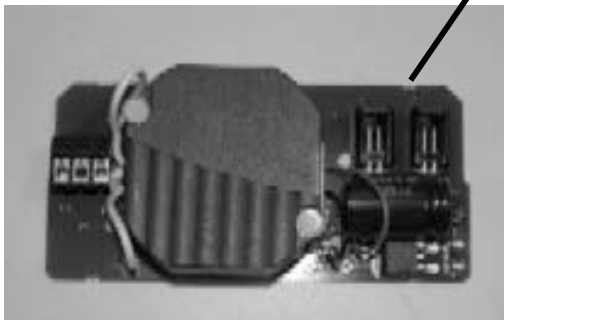
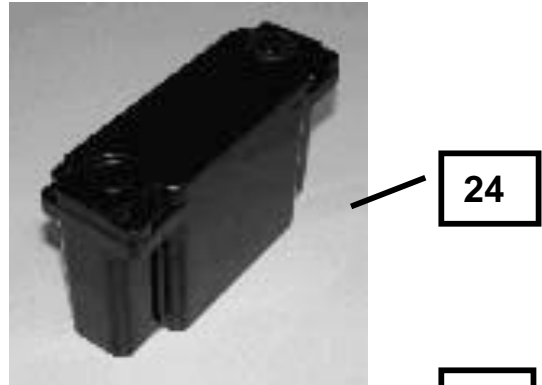
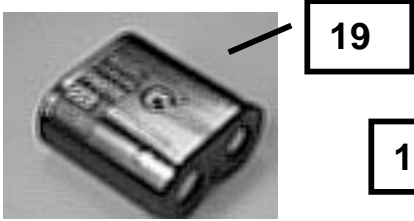
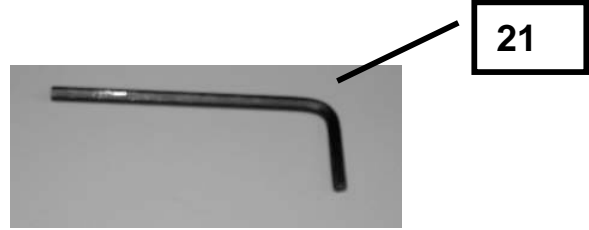
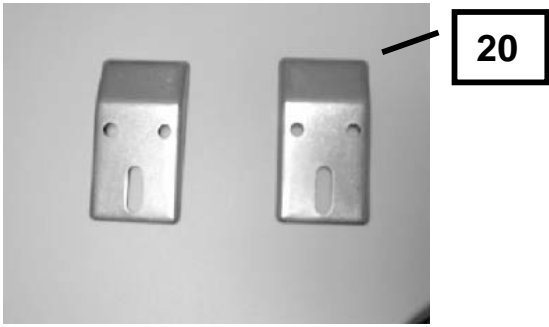
★ Replace XXX with
Fixture Color Code

[6] REPAIR PARTS LIST

ITEM #	Part Number	COMPONENT DESCRIPTION	QUANTITY
	738232.XXX0A	COVER KIT (INCLUDES 1 EA ITEMS 1,2,4 ;3 EA ITEM 3)	1
1		COVER	1
2		SCREW (Tamper Resistant)	1
3		WASHER/CAP	1
4		WELLNUT	1
	738233.XXX0A	COVER MTG KIT (INCLUDES 1 EA ITEMS 2,4;3 EA ITEM 3))	1
5	047082-0070A	OUTLET CONNECTION (INCLUDES ITEMS 6,7,8,9,)	1
6		THREADED STUD	2
7		WASHER	2
8		CAPNUT	2
9		CONICAL SPONGE WASHER	1
10	738711-0070A	SENSOR MODULE	1
11	738712-0070A	O-RING (SEAL/GASKET)	1
12	738832-0070A	BEZEL ASSEMBLY (Includes items 12A through 12D)	1
12A	738714-0070A	BEZEL	1
12B	738831-0070A	RETAINING RING	1
12C	738829-0070A	HOLDING TAB	1
12D	738830-0070A	HOLDING SCREWS	4
13	738785-0070A	QUARTER-TURN SHUT-OFF VALVE 1/2" NPT X 1/2" COMP.	1
14	738113-0070A	LOCKNUT	1
15	738783-0070A	MANIFOLD ASSEMBLY (INCLUDES ITEMS 15A THROUGH 15D)	1
15A		BODY	1
15B		SHUT-OFF	1
15C		FILTER ASSEMBLY	1
15D		SOLENOID VALVE	1
16	738784-0070A	RUBBER GROMMET	1
17	738781-0070A	BACKFLOW PREVENTER	1
18	738708-100	BATTERY CASE ASSEMBLY (INCLUDES CASE, COVER & SCREWS)	1
19	738709-100	Battery - Photo Lithium, 6V	1
20	47058-0070A	K-2 Hanger	2
21	047082-0070A	Special Screw Driver	1
22	738793-0070A	Elbow - 1/2" NPTM x 2	1
23	738786-0070A	FLEXIBLE HOSE - 1/2" NPTF X 1/2" COMP.	1
24	738807-0070A	DC CASE ASSEMBLY (INCLUDES CASE, COVER & SCREWS)	1
25	738808-0070A	POWER BOARD	1
26	738809-0070A	MULTI BOARD	1
27	738810-0070A	CONNECTOR CABLE	1

[7] REPAIR PARTS PICTURES





[8] TROUBLE SHOOTING GUIDE

A. FLUSHING

1. CHECK POWER SUPPLY FIRST! Various problems can be caused by low dc supply voltage

(a) Operating range is 5.4 to 6.4 volts.

(b) On units which contain a 6 volt battery pack, be sure that holder contains 1 Lithium Photocell Battery, that battery contacts are not corroded, and electrical connections are secure. Battery replacement is recommended if voltage is less than 5.4 volts.

(c) On units that use an external 6 volt dc supply, check that 6 volts dc supply voltage is present, and that electrical connections are secure.

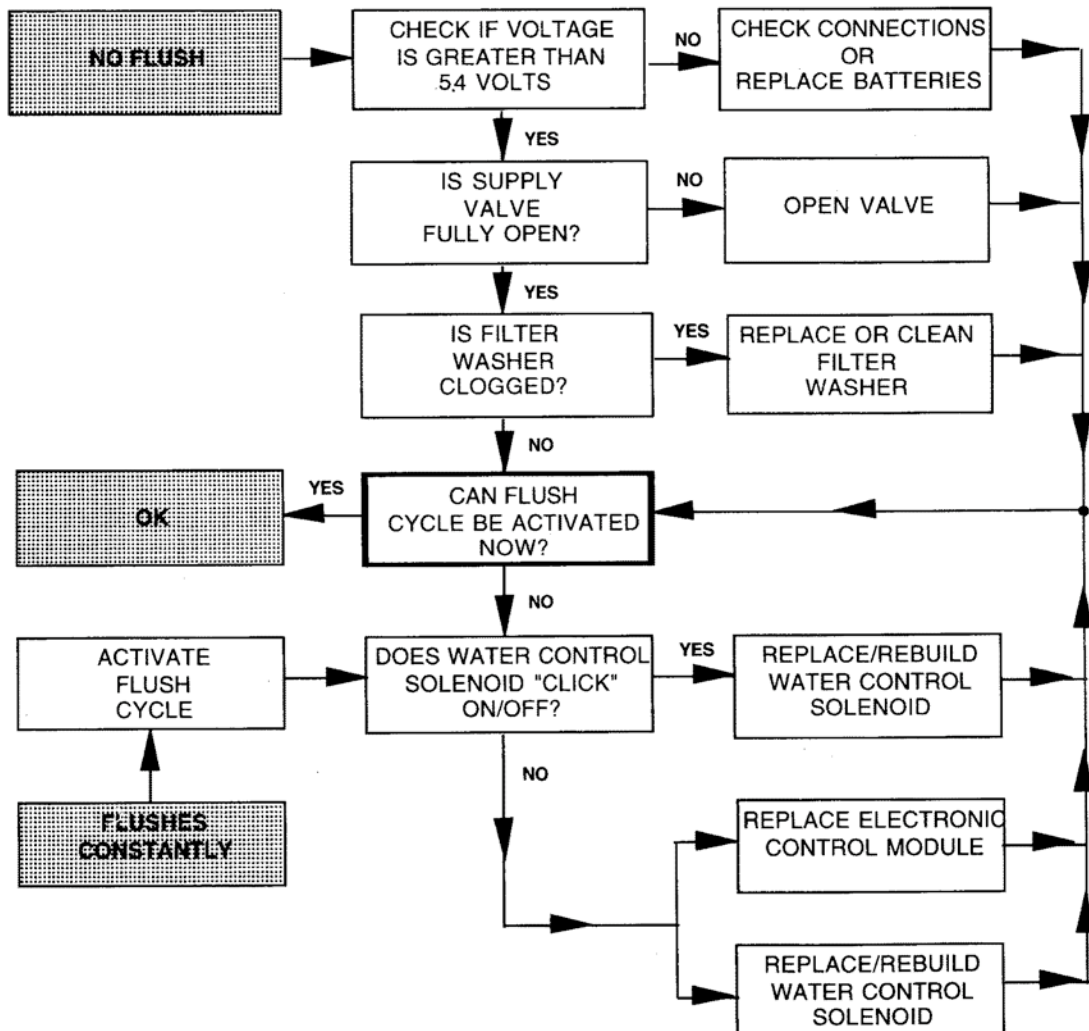
(d) Continuous double flashing indicates low battery.

2. DO PREVENTATIVE MAINTENANCE:

Check that sensor area is clean. If needed, clean with soft cloth dampened with warm water or non-abrasive glass cleaner.

3. TO ACTIVATE FLUSH CYCLE:

Stand to side of unit and place hand in front of IR sensor for 5 - 7 seconds, remove hand to activate flush cycle. LISTEN for ON and OFF "clicks" from water control solenoid that control flush cycle. To enter Default settings, connect power to sensor and allow ten flashes with nothing in detection zone.



B. DETECTION ZONE

Connect the sensor to the battery / power supply. The sensor L.E.D. will flash for 5 seconds. After 5 seconds, the sensor will be ready for use.

Turn water supply back on and test the installation. Stand in front of the sensor for at least 5 seconds then move away. Urinal should flush for the preset duration of 6 seconds.

If the urinal functions properly and the detection zone and duration is adequate, run the wire through the slot on the Battery Pack housing and close Battery Pack cover. It is recommended to use a sealant in the wire-through slot on the Battery Pack housing. It is recommended to use a non-permanent sealant only (like plumber's putty) around the Battery Pack Cover and around the cover screw slots. Tie up any excess wire for a "cleaner" installation and re-attach ceramic cover (with washer/cap) using the special screw and screwdriver.

If there is a problem with the flush or the detection zone or the flush time needs to be adjusted, disconnect the sensor from the battery / power supply and proceed as listed below.

NOTE: Please read all the instructions prior to attempting to program the sensor.

The Detection Zone (distance) and the Time Period Settings can be easily changed without a remote control device. The programming mode is activated each time the power is connected to the sensor. If programming is required, after the sensor has been in operation, the power (battery or mains) source must first be disconnected. Start with the power disconnected from the sensor.

Setting the Detection Zone (Distance): Apply power to the sensor. While the Sensor Control LED is blinking slowly, place your hand 30 –50 mm (1 – 2 in.) in front of the sensor. When the LED stops blinking and stays "on," stand just beyond the desired detection distance (in line with the sensor). Stay at that position until the LED begins to blink again. Once the Sensor Control LED begins to blink again, the detection zone is set and the time period can now be programmed. While the sensor is still blinking, go to the following step to select the desired time period.

Setting the Time Period: While the Control LED is blinking, again hold your hand in front of the sensor (distance about 30 – 50 mm (1 – 2 in.)). The Sensor Control LED will turn off and then begin to flash very slowly (approximately every 2 seconds). Each flash represents a time period value. - See below for time period table. When the sensor has flashed the number of times correlating to the desired time period, remove your hand from the detection zone of the sensor.

TIME PERIOD TABLE

Urinal Function

Flash Number	1	2	3	4
Flush Time	4 sec	6 sec	8 sec	10 sec

AMERICAN-STANDARD ONE-YEAR LIMITED WARRANTY

If inspection of this American-Standard plumbing product, within one year after its initial purchase, confirms that it is defective in materials or workmanship, American-Standard will repair or, at its option, exchange the product for a similar model.

This warranty **does not apply** to local building code compliance. Since local building codes vary considerably, the purchaser of this product should check with a local building or plumbing contractor to insure local code compliance before installation.

This warranty **shall be void** if the product has been moved from its initial place of installation; if it has been subjected to faulty maintenance, abuse, misuse, accident or other damage; if it was not installed in accordance with American-Standard's instructions; or if it has been modified in a manner inconsistent with the product as shipped by American-Standard.

American-Standard's option to repair or exchange the product under this warranty does not cover any labor or other costs of removal or installation, **nor shall American-Standard be responsible for any other incidental or consequential damages attributable to a product defect or to the repair or exchange of a defective product, all of which are expressly excluded from this warranty.** (Some states or provinces do not allow the exclusion or limitation of implied warranties, so this exclusion may not apply to you.)

This warranty gives you specific legal rights. You may have other statutory rights that vary from state to state or from province to province, in which case this warranty does not affect such statutory rights.

For service under this warranty, it is suggested that a claim be made through the contractor or dealer from or through whom the product was purchased, or that a service request (including a description of the product model and of the defect) be sent to the following address:

In the United States:
American Standard Inc.,
P.O. Box 6820
Piscataway, New Jersey 08855
Attention: Director of Consumer Affairs

For residents of the United States, warranty information may also be obtained by calling the following toll free number: (800) 442-1902

In Canada:
American-Standard,
2480 Stanfield Rd.,
Mississauga, Ontario
Canada L4Y 1S2

Toll Free: (800) 387-0369

In Mexico:
Customer Service Manager
Ideal Standard, S.A. de C.V.
Via Morelos #330
Col. Santa Clara
Ecatepec 55540 Edo. Mexico