

# SUB COMPONENT DRAWINGS

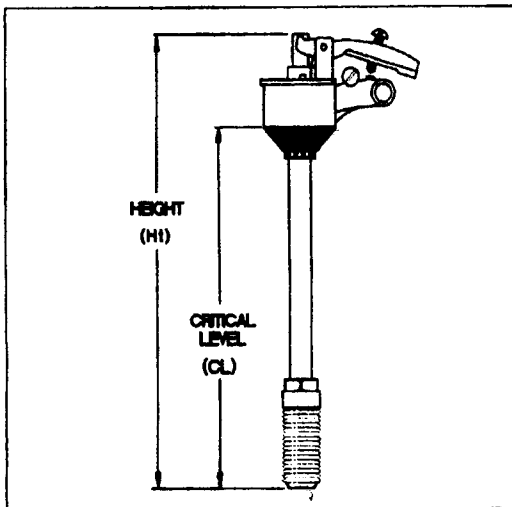
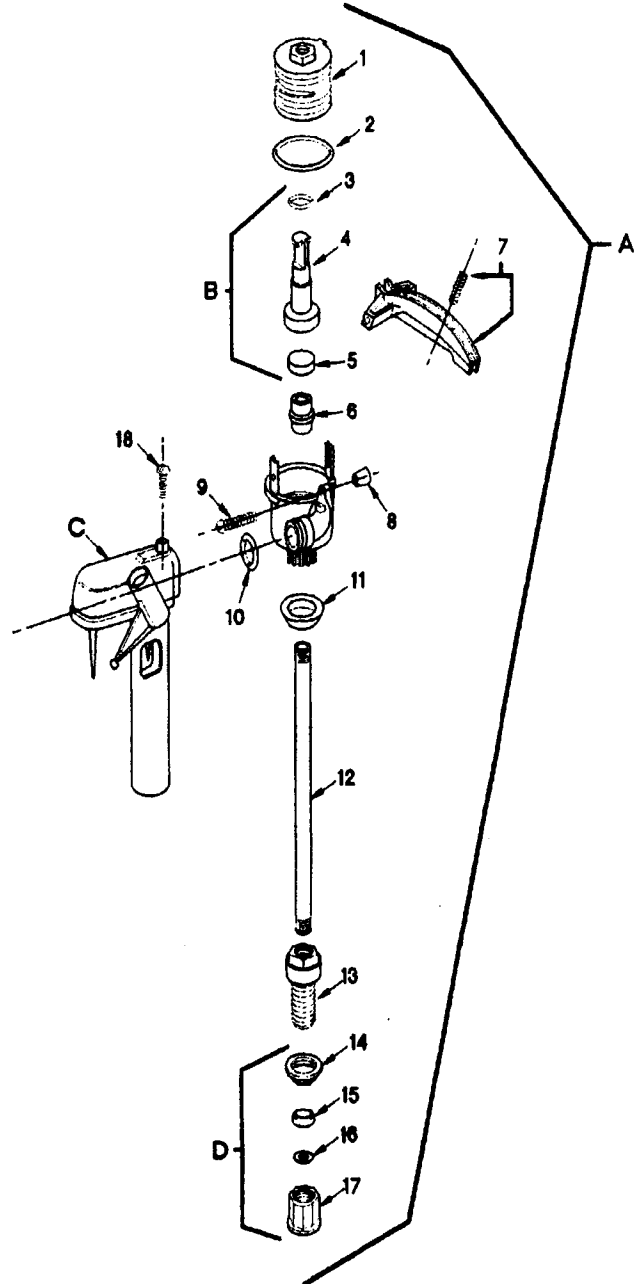
## BALLCOCK ASSEMBLY Part Nos. 190, 191 DIVERTER ASSEMBLY Part No. 197

KEY NO.	DESCRIPTION	PART NO.	
A	Ballcock Assembly	190	191
CL	C-L Critical Level Height	10"	9-3/8"
Ht	Height	12-1/2"	11-7/8"
C	Diverter	197	197
D	Coupling nut Assembly	A267	A267

The Following Items Are Not Sold Separately

1	Adjusting plug
2	O-Ring
B	Plunger Assembly
3	Plunger O-Ring
4	Plunger
5	Rubber Disc
6	Nylon Seat
7	Float Lever and Screw
8	Bumper
9	Bolt
10	O-Ring
11	Shank Washer
12	Ballcock Shaft
13	Ballcock Shank
14	Lock Nut
15	Washer
16	Friction ring
17	Coupling Nut
18	Screw

**FIGURE 39**



Plumbing Parts Depot  
800-448-8977  
www.ppd.biz

# SUB COMPONENT DRAWINGS

**TILT VALVE ASSEMBLY** Part Nos. 259, 260, 280  
**PINION HOLDER ASSEMBLY** Part No. 258

Plumbing Parts Depot  
 800-448-8977  
 www.ppd.biz

KEY NO.	DESCRIPTION	PART NO.		
A	<b>Flush Valve Assembly</b>	259	260	280
	Valve Height	8-1/8"	8-1/8"	8-1/8"
	Overflow Level	3-1/2"	3-1/2"	3-1/2"
B	Lift Strap	267	A775	A775
C	Rubber Disc	263	263	263
D	Pinion Holder Assembly	258	258	258

**The Following Items Are Not Sold Separately**

- 1 Cap Counterweight
- 2 Screw Plug
- 3 Mounting Bolt
- 4 Rubber Gasket
- 5 Wingnut

**FIGURE 45**

